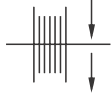
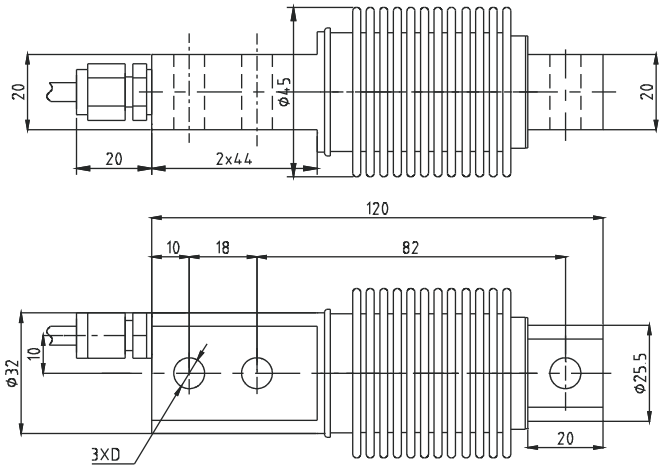


HSX Load cell

HSX



额定载荷(kg) Rated Load	D
5,10,20,30,40,50,75	φ 8.2
100,150,200,250	φ 10.2
300,500	φ 10.2

料斗秤、皮带秤、配料系统  
Hopper scale, belt scale, blending system

TECHNICAL PARAMETER

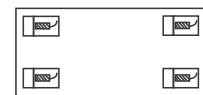
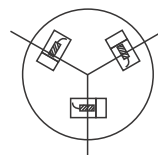
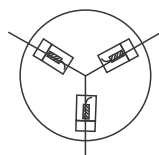
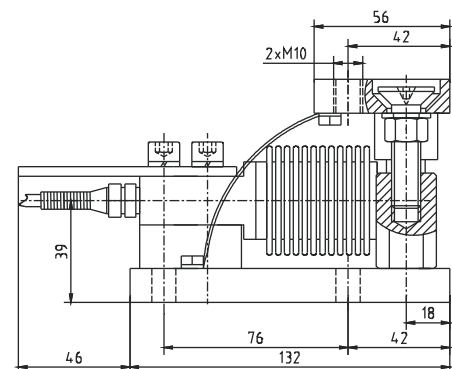
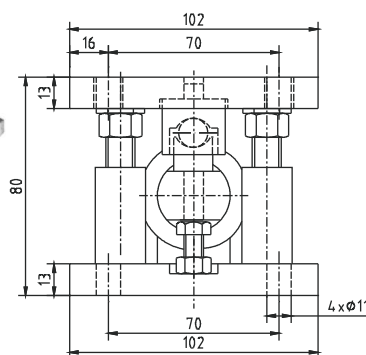
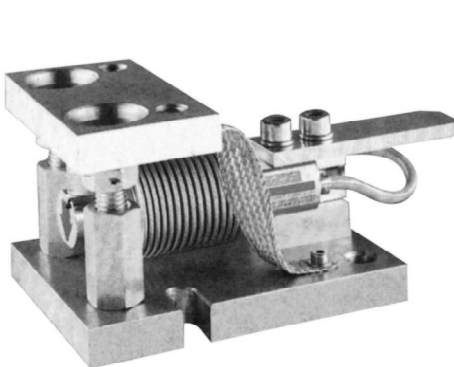
4Wires:Exc+(红,Red);Exc-(黑,Black);Sig+(绿,Green);Sig-(白,White)

额定载荷Rated load	5,10,20,30,40,50,75,100, 150,200,250,300,500kg	绝缘电阻Insulation resistance	≥ 5000 MΩ
精度等级 Accuracy class	C3	额定温度 Nominal Temp Range	-10~+40℃
灵敏度Sensitivity	2.0 ± 0.002mV/V	工作温度范围Service Temp Range	-30~+70℃
线性误差 Non-linearity	± 0.02%F.S	安全负载Safe load limit	150%F.S
滞后误差 Hysteresis error	± 0.02%F.S	破坏负载Breaking load	200%F.S
蠕变 (30分钟) Creep(30min)	± 0.015%F.S	额定激励电压Nominal of range excitation	10~12V DC
零点温度影响TC ZERO	± 0.015%F.S/10℃	密封等级Protection Class	IP68
灵敏度温度影响TC SPAN	± 0.015%F.S/10℃	材料Material	合金钢Alloy Stel
输入阻抗Input resistance	400 ± 20 Ω	电缆Cable	不锈钢Stainless Stel
输出阻抗Output resistance	352 ± 3 Ω		Length:3m

HSX Meighing Module

HSX

总装D模块 (Diagram D)

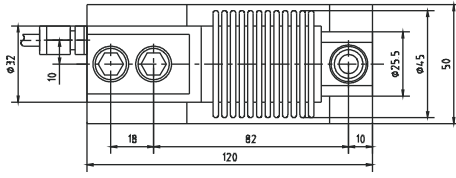
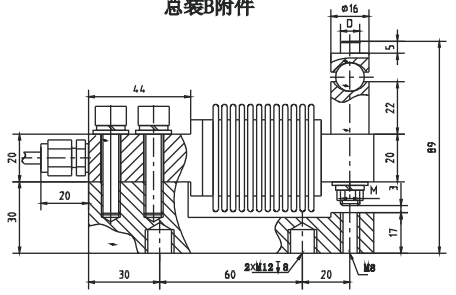


径向安装 Radial installation

切向安装 Cutting installation

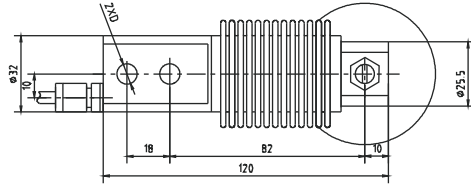
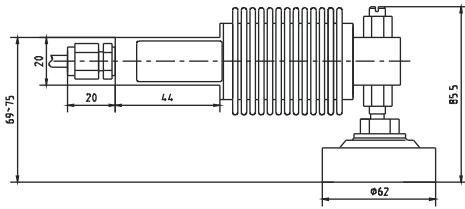
矩形安装 Rectangle installation

总装B附件



量程 (kg)	D	M
5, 10, 20, 30, 40	ø8	M8
50, 75, 100, 150, 200, 250	ø10	M10

总装E附件



量程 (Kg)	尺寸 (mm)	D
5, 10, 20, 30, 40	ø8.2	ø8.2
50, 75, 100, 150, 200, 250	ø10.2	ø10.2

总装C附件

