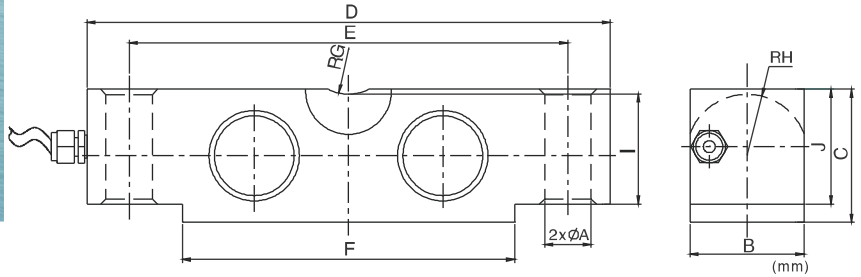


OSB Load cell

OSB



量程(klb)	A	B	C	D	E	F	G	H	I	J
10~25	17.3	42.9	49.3	196.9	165.1	125.1	19.1	22.9	41.4	43.2
40	21	49.3	62.0	260.4	215.9	162.4	25.4	28.5	50.8	53.3
50~75	27.0	62.0	74.7	260.4	215.9	162.4	25.4	34.8	64.5	67.3
100~125	41.0	73.6	98.0	387.4	323.8	228.4	38.1	45.7	83.8	87.1

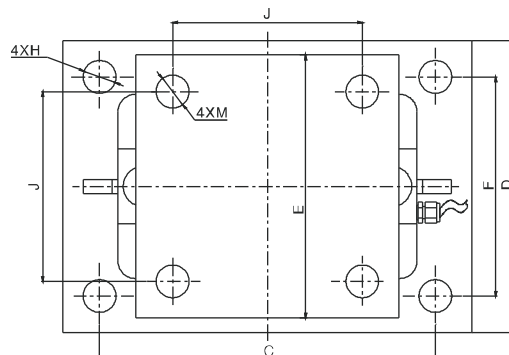
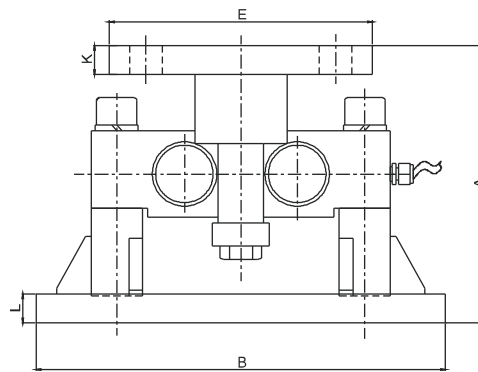


汽车衡、仓储秤等  
Truck scale, warehouse scale

TECHNICAL PARAMETER

4Wires:Exc+(红,Red);Exc-(黑,Black);Sig+(绿,Green);Sig-(白,White)

额定载荷 Rated load	10、20、25、40、50、60、75、100、125klb	绝缘电阻 Insulation resistance	≥5000 MΩ
精度等级 Accuracy class	0.05	额定温度 Nominal Temp Range	-10~+40℃
灵敏度 Sensitivity	3.0 ± 0.003mV/V	工作温度范围 Service Temp Range	-30~+70℃
线性误差 Non-linearity	± 0.05%F.S	安全负载 Safe load limit	150%F.S
滞后误差 Hysteresis error	± 0.05%F.S	破坏负载 Breaking load	200%F.S
蠕变 (30分钟) Creep(30min)	± 0.03%F.S	额定激励电压 Nominal of range excitation	10~12 V DC
零点温度影响 TC ZERO	± 0.02%F.S/10℃	密封等级 Protection Class	IP67
灵敏度温度影响 TC SPAN	± 0.02%F.S/10℃	材料 Material	合金钢 Alloy Steel
输入阻抗 Input resistance	750 ± 10Ω	电缆 Cable Length:	12m(10~40klb); 16m(50~125klb)
输出阻抗 Output resistance	702 ± 5Ω		



量程(klb)	A	B	C	D	E	F	H	J	K	L	M
10~25	168	254	190.5	203	203	152	20	152	19	19	20
40	198	355.6	292.1	254	203	190.5	28.5	152	19	22.7	20
50~75	241.3	355.6	292.1	254	228.6	190.5	28.5	165	25.4	22.8	28.5