

SB

Product Details

SB Installation diagram

SB Static loading module B Installation diagram

SB Dynamic loading module Installation diagram

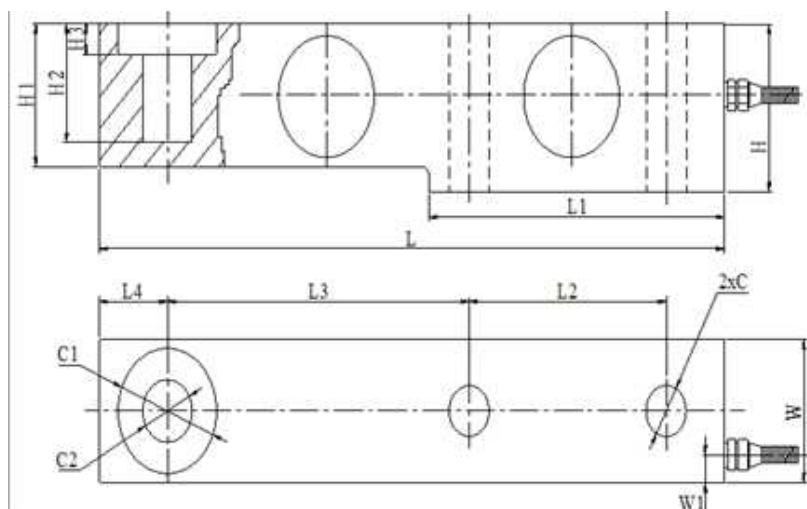
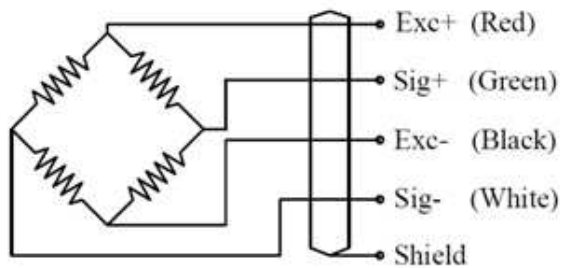
FEATURES:

- Capacity: 300kg to 25t
- OIML C3 approval
- Material Option: Stainless steel, alloy steel

APPLICATION:

- Truck scale
- Platform scale

Wiring Diagram



Outline Dimension:														
Rated capacity	L	L1	L2	L3	L4	H	H1	H2	H3	C	C1	C2	W	W1
300kg~3t	203	95	64	98	22	43	36.6	30.5	8	Φ13	Φ32	Φ16	36.6	7
5t~8t	235	110	66	124	22	52	48	30	12	Φ21	Φ38	Φ22	48	7
10t	279	133	82	140	32	67	60	20	8.5	Φ28	Φ48	Φ32	60	8.5
15t~25t	318	153	89	159	38	82.5	70	24	9.5	Φ34	Φ54	Φ38	70	9.5

SPECIFICATION:	
Rated output: 2.0±0.002mv/v	Maximum safe overload: 150% OF R.C; 120% OF R.C (20t~25t)
Combined error: ±0.03% F.S	Ultimate safe overload: 250% OF R.C; 200% OF R.C (20t~25t)
Non-repeatability: ±0.02% F.S	Recommended Excitation: 10 to 12V DC
Non-linearity: ±0.03% F.S	Maximum Excitation: 15V DC
Hysteresis error: ±0.03% F.S	Environment protection: IP67 (300kg~500kg) :IP68
Zero balance: ±1% F.S	Input impedance: 400±20Ω
Creep error(30minutes): ±0.02% F.S	Output impedance: 352±3Ω
Temperature effect on zero: ±0.02% F.S	Insulation resistance at 50V DC: ≥5000MΩ
Temperature effect on output: ±0.02% F.S	Material: nickel-plated alloy steel
Compensated temperature range: -10 to +40℃	Cable length: 2.6meter(300kg~2t),3.5meter(3t), 5.2meter(5t~8t),7meter(10t),12meter(15t~25t) diameter 6mm