



LOAD CELLS

double-ended shear beam load cells

DDR

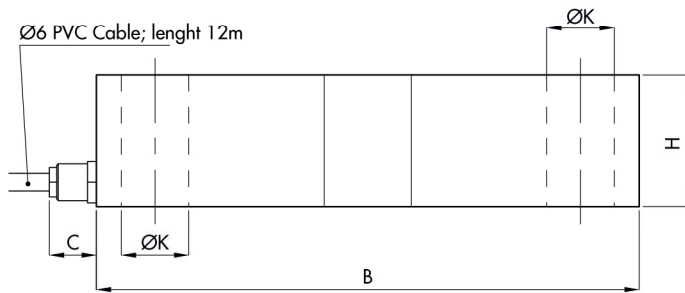
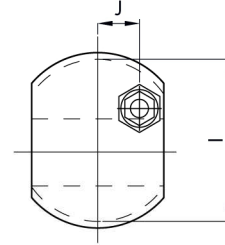
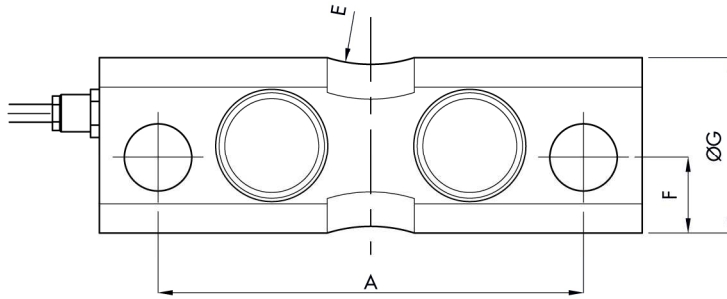
Suitable for weighing tanks and silos
 ATEX (optional)
 Approved 3000 division O.I.M.L. R60 C Class
 Stainless steel
 Fully welded airtight
 IP68 Protection (EN 60529)
 Easy to install
 High linearity and low mechanical profile
 High temperature version (optional)
 3 ton version -NO OIML, NO ATEX-

TECHNICAL CHARACTERISTICS DDR

| | |
|-------------------------------------|---|
| Rated load (R.L.): | 3 ton (NO OIML), 5, 10, 20, 30, 50, 75, 100 ton |
| Combined error: | < ±0.017% of R.O. |
| Repeatability: | < ±0.015% of R.O. |
| Creep (20 minutes): | < ±0.016% of R.L. |
| Safe overload: | 150% of R.L. |
| Ultimate overload: | 200% of R.L. |
| Recommended input: | 5÷15 Vdc/Vac |
| Input resistance: | 800 ± 20 Ohm |
| Output resistance: | 700 ± 3 Ohm |
| Insulation resistance: | > 5000 M Ohm |
| Rated output (R.O.): | 2 ± 0.1% mV/V |
| Zero balance: | < ±2% of R.O. |
| Temperature range: | -30 ÷ +70 °C |
| Compensated temperature range: | -10 ÷ +40 °C |
| Temperature effect on zero balance: | < ±0.010% of R.O./5°K |
| Temperature effect on output: | < ±0.006% on output/5°K |
| Max load deflection: | 0.6÷1 mm |
| Precision class: | 3000 n. OIML |
| Degree of protection: | IP68 |
| Electrical connection: | 6 conductors shielded cable; length 12 m |



LOAD CELLS
 double-ended shear beam load cells
 DDR



Ø6 PVC Cable; lenght 12m

| Electrical Connection | |
|-----------------------|--------------|
| +Excitation | Green |
| -Excitation | Black |
| +Sense | Blue |
| -Sense | Yellow |
| +Signal | Red |
| -Signal | White |
| Shield | Cable shield |

| CAPACITY | A | B | C | D | E | F | ØG | H | ØI | J | ØK | WEIGHT |
|----------|-----|-----|----|----|------|------|------|----|----|----|----|--------|
| 5-20t | 145 | 185 | 16 | 41 | r.50 | 25.7 | 59.5 | 45 | 55 | 14 | 23 | 3.2kg |
| 30-50t | 220 | 285 | 16 | 48 | r.50 | 29.7 | 74.5 | 60 | 66 | 22 | 30 | 8kg |
| 75-100t | 260 | 340 | 16 | 66 | r.50 | 37.2 | 99.5 | 80 | 91 | 32 | 50 | 14.3kg |

